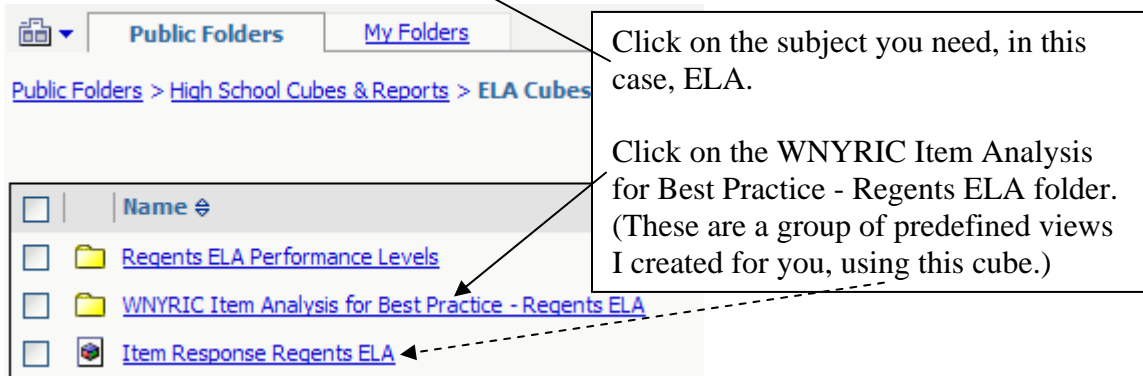
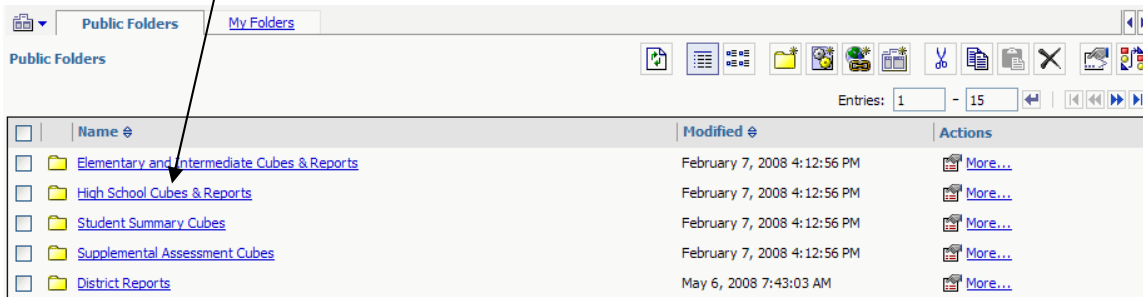
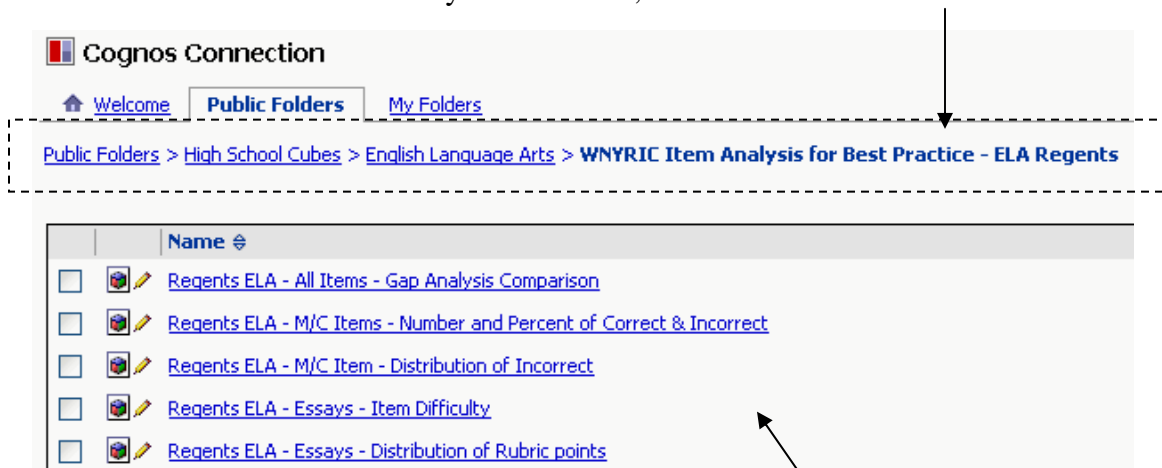


Using the WNYRIC Item Analysis for Best Practice Views

From Public Folders, go to the High School Cubes & Reports folder.



Notice how all of the selections you clicked on, show across the screen here.



Also, all the different view choices are now showing (above).

Click on the first choice, Regents ELA - All Items- Gap Analysis Comparison. You will see a view like this, with your school district's 'Item Difficulty' results for each question, compared to your BOCES region of component school districts, and also compared to all districts combined (from districts who scan answer sheets from Charters, Non-Pubs, Orleans Niagara, Erie 1, Erie 2, Cattaraugus Allegany, Greater Southern Tier, Monroe 1, Monroe 2, Wayne Finger lakes, Genesee Valley, Rochester, and Buffalo).

Item Difficulty as values		My BOCES			
		Main CSD	My BOCES	All Districts and Course Sections	
1. Information/Understanding	L&R-Evaluate writing strategies and presentational features that affect interpretation...	IA - MC04	96.89%	95.83%	93.01%
		IA - MC05	/0	85.95%	85.95%
		IA - MC06	/0	77.69%	77.69%
		IB - MC12	/0	91.36%	90.99%
	L&R-Interpret and analyze complex informational texts and presentations...	IB - MC14	85.71%	83.22%	84.74%
		IA - MC01	72.50%	76.89%	73.12%
		IA - MC02	87.23%	83.78%	83.78%
		IA - MC03	94.59%	93.95%	93.65%

To see all the dimensions available in this cube, click on the 'wrapping' button here.

Filter on an assessment date by clicking on All Assessment Dates to open the dropdown menu. Float your mouse over the desired year to get the detailed list of administration dates, and click on your selection, June 2006 (in this example)

If you have more than one building for HS students, we can show that data in separate columns. To accomplish this, nest All Districts and Course Sections in the columns.

Item Difficulty	Item Description	My BOCES		All Districts and Course Sections
		Main CSD	My BOCES	
1. Information/Understanding	IA - Writing-Essay A	73.77%	73.18%	71.00%
	IA - MC01	71.16%	75.74%	74.15%
	IA - MC02	84.51%	84.88%	83.80%
	IA - MC03	95.12%	94.97%	95.29%
	IA - MC04	82.21%	85.19%	85.13%

This style of showing data is called nesting.

Now the buildings each have their own results to study and compare.

My BOCES					All Districts and Course Sections
Main CSD					
Blue HS	Green HS	Main CSD	My BOCES		
73.95%	74.01%	73.77%	73.18%	71.00%	
77.78%	67.63%	71.16%	75.74%	74.15%	
83.14%	85.75%	84.51%	84.88%	83.80%	
94.25%	95.89%	95.12%	94.97%	95.29%	

To nest the General and Special Education in separate columns, perform the same drag and drop as you did to nest the buildings. Place your mouse cursor over the dimension called 'All Education Types'. Click and hold your mouse button down as you drag the mouse to create a highlighted bar, just below the building names, as shown below, and release the mouse button.

Item Response Regents ELA COGNOS

All Responses ▾ All Districts and Course Sections ▾ **All Education Types ▾** All Integration Levels ▾ All Genders ▾

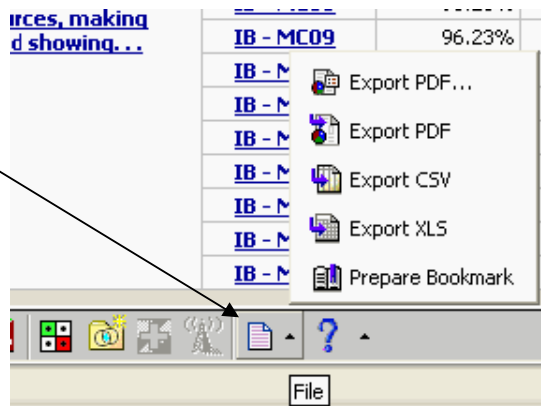
▾ Tests Accommodations ▾ All Standards Met ▾ MEASURES ▾

My BOCES					All Districts and Course Sections	
Main CSD						
Blue HS	Green HS	Main CSD	My BOCES			
Facts, and ideas to	IA - Writing-Essay A	73.95%	74.01%	73.77%	73.18%	71.00%
ation from media	IA - MC01	77.78%	67.63%	71.16%	75.74%	74.15%
ry films, news...	IA - MC02	83.14%	85.75%	84.51%	84.88%	83.80%
	IA - MC03	94.25%	95.89%	95.12%	94.97%	95.29%

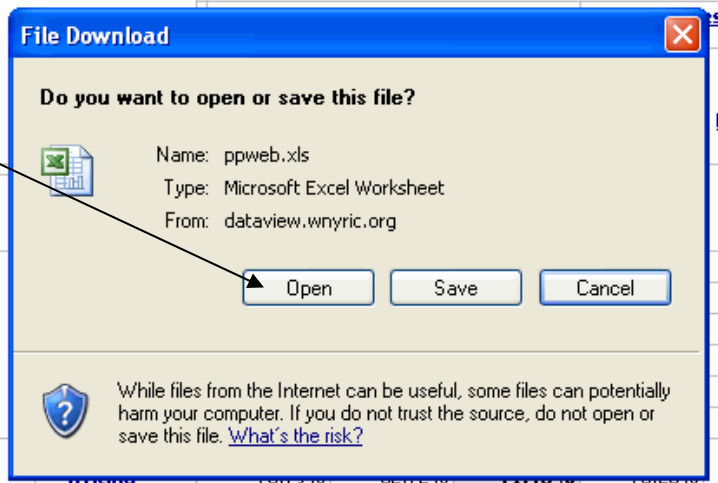
The Education Types are now nested below each building.

My BOCES									All Districts and Course Sections
Main CSD									
Blue HS			Green HS			Main CSD	My BOCES		
General Education	Special Education	All Education Types	General Education	Special Education	All Education Types				
78.58%	53.91%	73.95%	77.33%	57.98%	74.01%	73.77%	73.18%	71.00%	
80.19%	67.35%	77.78%	72.01%	46.48%	67.63%	71.16%	75.74%	74.15%	
89.62%	55.10%	83.14%	89.50%	67.61%	85.75%	84.51%	84.88%	83.80%	
99.06%	73.47%	94.25%	98.83%	81.69%	95.89%	95.12%	94.97%	95.29%	

To print and/or save this data, first export the file using this button on the lower toolbar. Click on it to get a menu and then click on Export XLS.



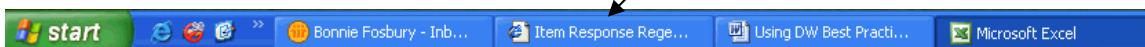
Click on Open, so you can make any adjustments to column widths, titles, colors, etc.



It opens in Excel, in its own window. Make changes and use File → Save and/or Print.

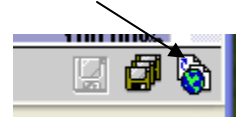
		General Education	Special Education	All Education Types	General Education	Special Edu
1	Regents ELA - Item Analysis - Comparison					
2	[Standards][JUNE 2006][All Response Status][All Units][All Responses][All Districts and Course Sections][All Education Types][All Integration Levels][All Genders][All Ethnicities][All Grades][All E					
3						
4						
5						
6	Item Difficulty as values					
7						
8	1. Information Understanding					
9	L&W-Analyze and integrate data, facts, and ideas to communicate information					
10	L&W-Interpret and analyze information from media presentations, such as documentary films, news...					
11						

To return to the data warehouse software, click on it from your computer taskbar.

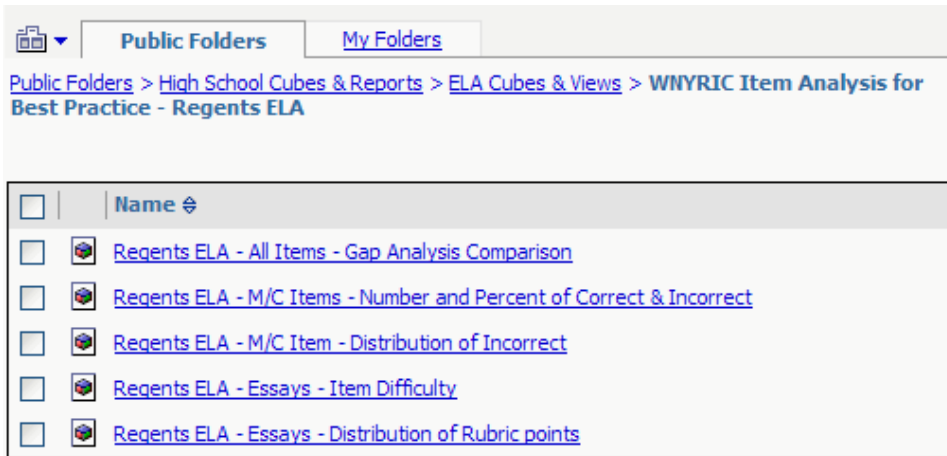


(Note: If you used the PDF export, instead of XLS or CSV, the file will come up in Adobe Acrobat Reader, within the browser. Use the Adobe toolbar icons to print or save.)

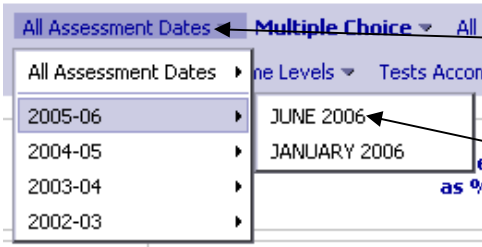
To return to the cube view selection area from the cube, click on the globe icon.



You are back at the area where you can select a cube view.



For each of these views, you need to filter on an assessment date. For the views after the first one, you must also filter on the district or a building or a specific course section.



Click on All Assessment Dates to activate the dropdown menu, slide your cursor to the desired year, and select the date by clicking on it here.

Filter on your district name.
(If you want a building or course section, just wait for the next level of menu to show, and click on your choice.)



The following are samples of what the rest of these Best Practice views look like...

M/C Items - Number and Percent of Correct & Incorrect

This shows the data for each MC item, for correct and incorrect responses.

Number of Responses as values		Correct	Incorrect	% Correct	% Incorrect	
1. Information/Understanding	L&W-Interpret and analyze information from media presentations, such as documentary films, news...	IA - MC01	85	19	81.73%	18.27%
		IA - MC02	81	23	77.80%	22.12%
		IA - MC03	95	9	91.35%	8.65%
		IA - MC04	78	26	75.00%	25.00%
		IA - MC05	80	24	76.92%	23.08%
	R&W-Analyze and synthesize information from difference sources, making connectins and showing...	IA - MC06	100	4	96.15%	3.85%
		IB - MC07	101	3	97.12%	2.88%
		IB - MC08	102	2	98.08%	1.92%
		IB - MC09	102	2	98.08%	1.92%
		IB - MC10	103	1	99.04%	0.96%

M/C Items - Distribution of Incorrect

This one displays, for only the students who answered incorrectly, the % for the distribution over the possible responses. (For each item, the choice that shows 0% was the correct response.)

Number of Responses as % of row total		1	2	3	4	Incorrect	
1. Information/Understanding	L&W-Interpret and analyze information from media presentations, such as documentary films, news...	IA - MC01	66.16%	23.74%	0.00%	10.10%	100.00%
		IA - MC02	0.00%	13.08%	66.36%	20.56%	100.00%
		IA - MC03	64.52%	32.26%	3.23%	0.00%	100.00%
		IA - MC04	41.46%	0.00%	47.15%	11.38%	100.00%
		IA - MC05	62.50%	3.68%	33.82%	0.00%	100.00%
	R&W-Analyze and synthesize information from difference sources, making connectins and showing...	IA - MC06	0.00%	45.95%	13.51%	40.54%	100.00%
		IB - MC07	68.57%	2.86%	28.57%	0.00%	100.00%
		IB - MC08	0.00%	46.55%	20.69%	32.76%	100.00%
		IB - MC09	18.52%	35.19%	46.30%	0.00%	100.00%
		IB - MC10	86.96%	0.00%	8.70%	4.35%	100.00%
IB - MC11	30.73%	0.00%	66.83%	2.44%	100.00%		
IB - MC12	43.88%	51.67%	5.16%	0.00%	100.00%		

Essays - Item Difficulty

The essay item difficulty view is just a subset of the first comparison view we looked at.

Item Difficulty as values		Essay	Essay	
1. Information/Understanding	IA - Writing-Essay A	L&W-Analyze and integrate data, facts, and ideas to communicate information	73.77%	73.77%
	IB - Writing-Essay B	R&W-Analyze and integrate data, facts, and ideas to communicate information	69.73%	69.73%
2. Lit Response & Expression	IIA - Writing-Essay A	R&W-Examine development and impact of literary elements, such as character...	64.35%	64.35%
3. Critical Analysis & Eval	IIB - Writing-Essay B	R&W-Analyze a wide range of texts using resources such as recognized experts...	67.62%	67.62%
Standards			68.87%	68.87%

Essays - Distribution of Rubric Points

This one displays the percent of students who received each of the possible points for each essay question.

Cognos PowerPlay Web Explorer Item Response Regents ELA COGAS02

Regents ELA - Essays - Distribution of Rubric Points

Standards JUNE 2006 Essay All Units All Responses Main CSD All Education Types All Integration Levels All Genders All Ethnicities All Grades

All ELL Status All Income Levels Tests Accommodations All Standards Met Number of Responses

Number of Responses as % of row total			0	0.5	1	1.5	2	2.5	3	3.5	4	4.5	5	5.5	6	Essay
1. Information/Understanding	L&W-Analyze and integrate data, facts, and ideas to communicate information	IA - Writing-Essay A	0.14%	0.14%	0.86%	0.29%	1.00%	1.29%	6.31%	8.32%	25.11%	18.65%	18.22%	10.90%	8.75%	100.00%
	R&W-Analyze and integrate data, facts, and ideas to communicate information	IB - Writing-Essay B	0.14%	0.00%	0.57%	0.43%	1.87%	3.59%	17.79%	9.18%	18.94%	12.20%	17.79%	11.33%	6.17%	100.00%
2. Lit Response & Expression	R&W-Examine development and impact of literary elements, such as character...	IIA - Writing-Essay A	0.29%	0.14%	3.01%	1.29%	4.16%	4.73%	12.91%	14.92%	22.81%	14.06%	12.63%	3.87%	5.16%	100.00%
3. Critical Analysis & Eval	R&W-Analyze a wide range of texts using resources such as recognized experts...	IIB - Writing-Essay B	0.14%	0.00%	1.00%	1.00%	1.87%	2.44%	12.05%	14.35%	28.26%	17.07%	10.04%	7.32%	4.45%	100.00%
Standards			0.18%	0.07%	1.36%	0.75%	2.22%	3.01%	12.27%	11.69%	23.78%	15.49%	14.67%	8.36%	6.13%	100.00%

Number of Responses as % of row total

as values

as % of row total

as % of row subtotals

as % of column total

as % of column subtotals

as % of grand total

To see the number of students instead of as % of row total, right-click your mouse here and then left-click on as values from the menu.

Now the data looks like this.

Number of Responses as values			0	0.5	1	1.5	2	2.5	3	3.5	4	4.5	5	5.5	6	Essay
1. Information/Understanding	L&W-Analyze and integrate data, facts, and ideas to communicate information	IA - Writing-Essay A	1	1	6	2	7	9	44	58	175	130	127	76	61	697
	R&W-Analyze and integrate data, facts, and ideas to communicate information	IB - Writing-Essay B	1	0	4	3	13	25	124	64	132	85	124	79	43	697
2. Lit Response & Expression	R&W-Examine development and impact of literary elements, such as character...	IIA - Writing-Essay A	2	1	21	9	29	33	90	104	159	98	88	27	36	697
3. Critical Analysis & Eval	R&W-Analyze a wide range of texts using resources such as recognized experts...	IIB - Writing-Essay B	1	0	7	7	13	17	84	100	197	119	70	51	31	697
Standards			5	2	38	21	62	84	342	326	663	432	409	233	171	2788

**Locating the WNYRIC Item Analysis for Best Practice Views
of
High School Assessments**

Public Folders → High School Cubes & Reports → ELA Cubes & Views →
WNYRIC Item Analysis for Best Practice - ELA Regents

Public Folders → High School Cubes & Reports → LOTE Cubes & Views →
WNYRIC Item Analysis for Best Practice - French Comprehensive

Public Folders → High School Cubes & Reports → LOTE Cubes & Views →
WNYRIC Item Analysis for Best Practice - French Proficiency

Public Folders → High School Cubes & Reports → LOTE Cubes & Views →
WNYRIC Item Analysis for Best Practice - Spanish Comprehensive

Public Folders → High School Cubes & Reports → LOTE Cubes & Views →
WNYRIC Item Analysis for Best Practice - Spanish Proficiency

Public Folders → High School Cubes & Reports → Math Cubes & Views →
WNYRIC Item Analysis for Best Practice - Math A

Public Folders → High School Cubes & Reports → Math Cubes & Views →
WNYRIC Item Analysis for Best Practice - Math B

Public Folders → High School Cubes & Reports → Science Cubes & Views →
WNYRIC Item Analysis for Best Practice - Chemistry

Public Folders → High School Cubes & Reports → Science Cubes & Views →
WNYRIC Item Analysis for Best Practice - Earth Science

Public Folders → High School Cubes & Reports → Science Cubes & Views →
WNYRIC Item Analysis for Best Practice - Living Environment

Public Folders → High School Cubes & Reports → Science Cubes & Views →
WNYRIC Item Analysis for Best Practice - Physics

Public Folders → High School Cubes & Reports → History Cubes & Views →
WNYRIC Item Analysis for Best Practice - Global History

Public Folders → High School Cubes & Reports → History Cubes & Views →
WNYRIC Item Analysis for Best Practice - US History

**Locating the WNYRIC Item Analysis for Best Practice Views
of
Elementary and Intermediate Assessments**

Public Folders → Elementary and Intermediate Cubes → ELA →
WNYRIC Item Analysis for Best Practice - ELA 3-8

Public Folders → Elementary and Intermediate Cubes → Math →
WNYRIC Item Analysis for Best Practice - Math 3-8

Public Folders → Elementary and Intermediate Cubes → Science →
WNYRIC Item Analysis for Best Practice - Science 4

Public Folders → Elementary and Intermediate Cubes → Science →
WNYRIC Item Analysis for Best Practice - Science 8

Public Folders → Elementary and Intermediate Cubes → Social Studies →
WNYRIC Item Analysis for Best Practice - Social Studies 5

Public Folders → Elementary and Intermediate Cubes → Social Studies →
WNYRIC Item Analysis for Best Practice - Social Studies 8